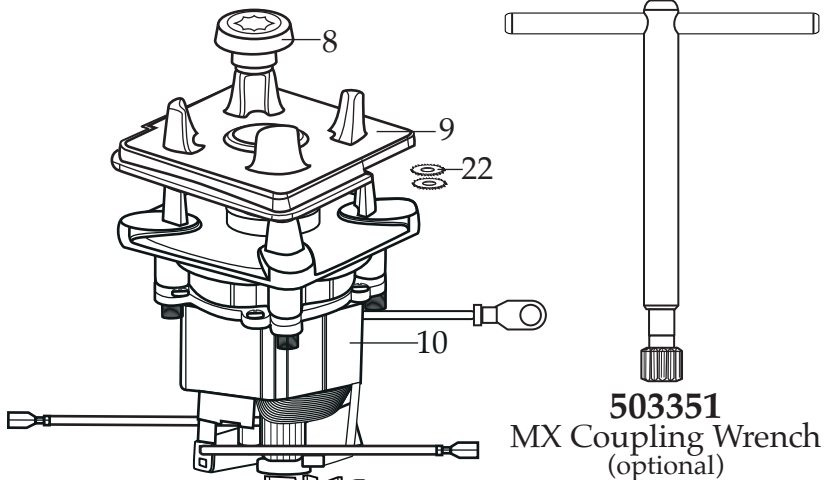


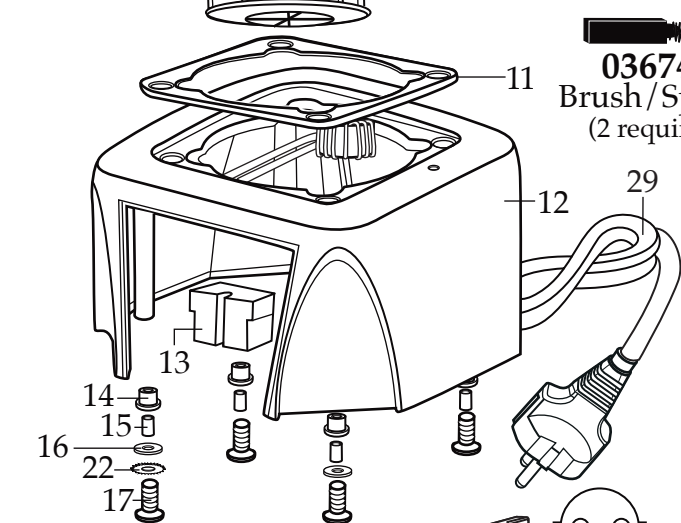
WARING COMMERCIAL®

Stalcast Xtreme Blender with
4 Reprogrammable Beverage Stations
and a 64 oz. Stackable Raptor Container

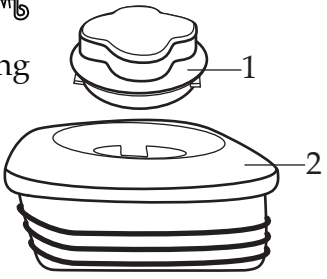
MX1500XTXSEESG with Sound Enclosure



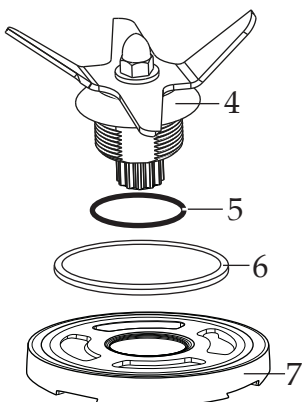
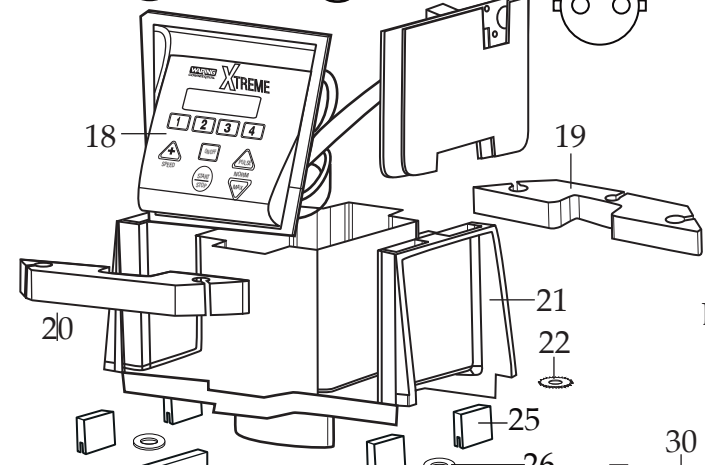
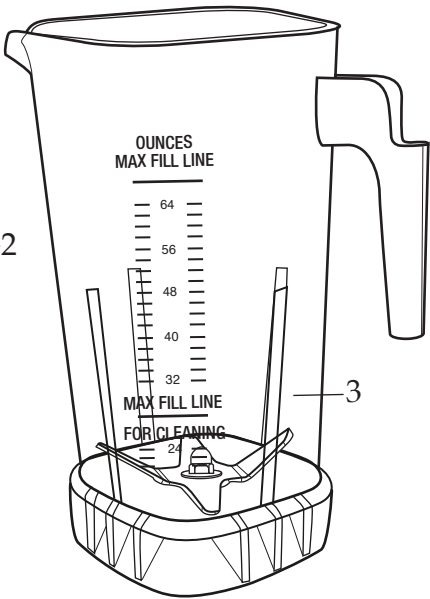
503351
MX Coupling Wrench
(optional)



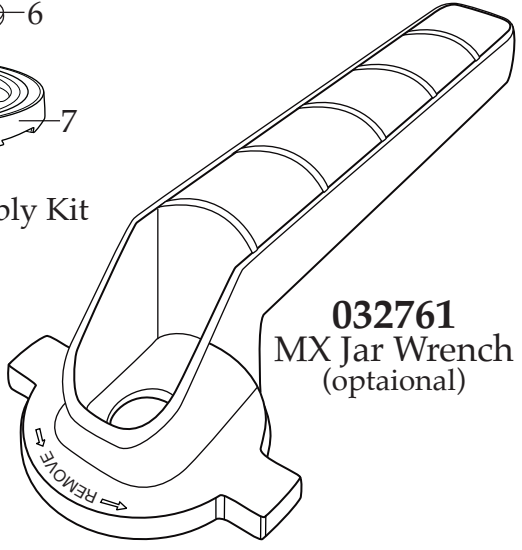
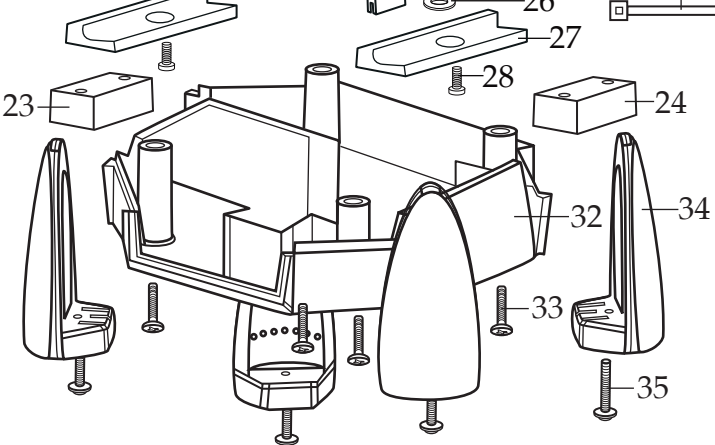
036743
Brush/Spring
(2 required)



032322
2 Piece Lid



030889
Blending Assembly Kit



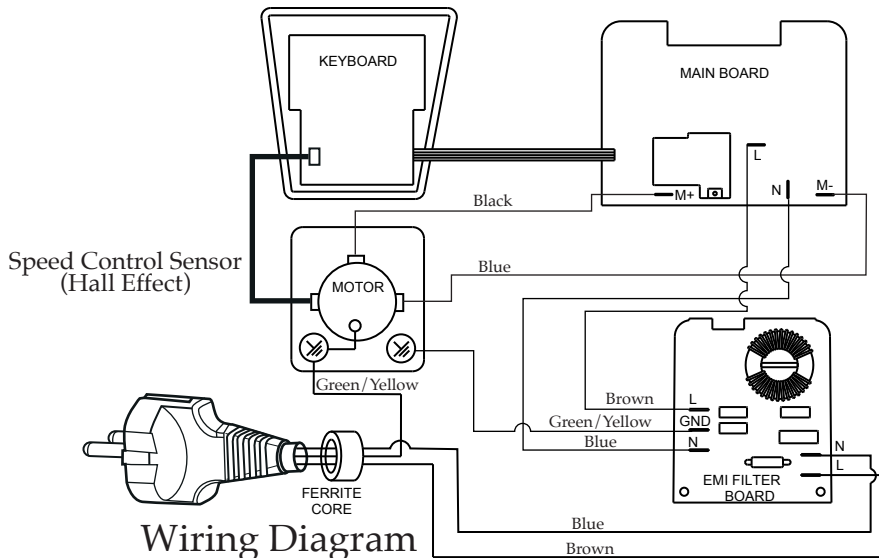
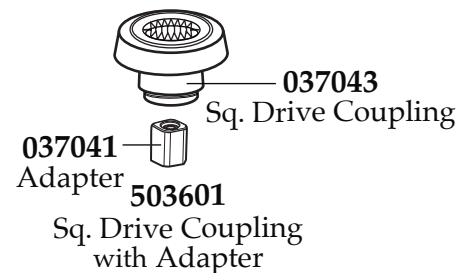
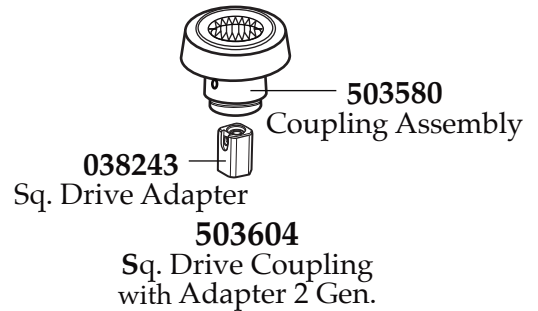
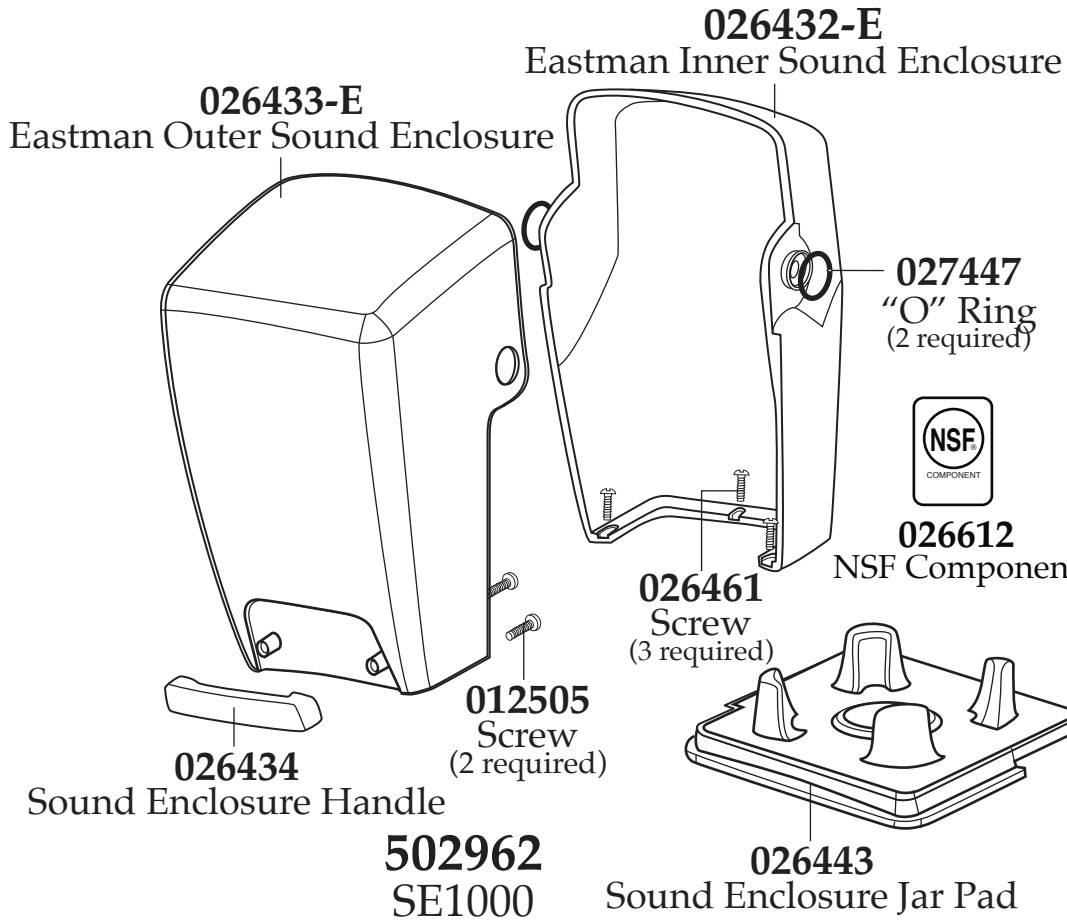
032761
MX Jar Wrench
(optional)



← Date Code Location
YY|MM|DD
year year|month month|day day



Illustration#	Part#	Description
1	028769-E	Eastman Jar Lid Cover
2	028768	Jar Lid
3	503326	64 oz Stackable Container ONLY
	503398	64 oz Stackable Container with Blending Assembly
4	503397	Blade Assembly
5	024271	Bearing Holder O Ring
6	024268	Rubber Nut Gasket
7	029631	Bearing Holder Nut
8	503601	Sq. Drive Coupling with Adapter <i>(on units after 3/29/2022)</i>
	503604	Sq. Drive Coupling with Adapter 2 Gen. <i>(changed after 5/7/2021)</i>
	028538	Drive Coupling
9	026443	Jar Pad
10	035399	Leili Motor with Sensor
11	038278	Dampening Plate Gasket <i>(on units after 8/25/2022)</i>
	026437	Dampening Plate Gasket
12	503382-E-67	MX Housings with Ferrite Core & Cord
13	028541	Motor Foam (2 required)
14	026439	Dampening Plate Bushing (4 required)
15	038486	Dampening Plate Sleeve (4 required <i>on units after 8/25/2022</i>)
	026453	Dampening Plate Sleeve (4 required)
16	026459	Washer (2 required)
17	028929	Sems (4 required)
18	035710	Control Panel with Interlock comes with key board-main board-filter board
19	028248	Top Housing Foam Rear Baffle
20	028249	Top Housing Foam Front Baffle
21		<i>Motor Housing is Included with Illustration# 12</i>
22	002943	Washer (3 required)
23	028247	Bottom Housing Foam Baffle
24	028542	Foam Baffle
25	034900	PCB Cushion (4 required <i>on units after 7/18/2019</i>)
26	037232	Neoprene Washer (2 required <i>on units after 7/18/2019</i>)
27	037007	PCB Mounting Bracket (2 required <i>on units after 7/18/2019</i>)
28	013768	Screw (2 required <i>on units after 7/18/2019</i>)
29		<i>Cord is Included with Illustration# 12</i>
30	013731	Cable Tie (3 required)
31	007556	Strain Relief
32		<i>Bottom Housing is Included with Illustration# 12</i>
33	012505	Screw (4 required)
34	026430	Corner Post (4 required)
35	028928	Sems (4 required)



Wiring Diagram